

# PEOPLE MOBILITY MANAGEMENT PRODUCT CATALOG

EMPLOYEE SELF SERVICE



VISITOR MANAGEMENT



CAFETERIA MANAGEMENT



ACCESS CONTROL



TIME-ATTENDANCE



JOB PROCESSING  
AND COSTING



CONTRACT WORKERS MANAGEMENT



FIELD VISIT MANAGEMENT



## COSEC SOLUTIONS

- Access Control
- Time-Attendance
- Visitor Management
- Cafeteria Management
- Contract Workers Management
- Job Processing and Costing
- Field Visit Management
- Employee Self-service

## PEOPLE MOBILITY MANAGEMENT SOLUTIONS

### COSEC SOLUTIONS



#### ACCESS CONTROL:

COSEC Access Control solution restricts unauthorized entry based on different checkpoints and conditions. Matrix Enterprise grade Access Control protects an organization's assets and manpower by controlling users' entry based on their credentials. COSEC Access Control for SMB and SOHO helps organization secure single location with no server required. Both solutions come with advance access control policies integrated with the Door Controller.



#### TIME-ATTENDANCE:

COSEC Time-Attendance is an enterprise grade solution for organizations with multiple locations spread across geographic regions. It automates all Time-Attendance and Leave Management processes like recording entries and exits, real-time head counts, report generation and salary processing.



#### VISITOR MANAGEMENT:

COSEC Visitor Management automates the entire process of registering a visitor through kiosk/mobile app, printing a pass, and capturing detailed information in a few seconds. The solution allows the host to greet visitors in a professional manner.



#### CAFETERIA MANAGEMENT:

COSEC Cafeteria Management software is a solution automating the process starting from placing an order to delivery, including the payment. It also allows item tracking, speedy transaction, and prevents wastage of food and error in accounting.



#### CONTRACT WORKERS MANAGEMENT:

COSEC Contract Workers Management is specifically designed for large organizations to help them manage all their contract workers management processes. This includes planning, work orders, enrolment, e-pass, attendance, timings, and access control. The solution also allows managers and contractors to improve labour productivity and enhance operational efficiency, bringing down overall cost.



#### JOB PROCESSING AND COSTING:

COSEC Job Processing and Costing allows managers to divide a project into multiple jobs and keep track of man hours spent after each pre-defined job. Managers can also pre-define the man hours expected to be spent after each job. The solution help managers keep track of the total man hours spent on each job, and in turn on the payments to be made for the same simultaneously.



#### FIELD VISIT MANAGEMENT:

COSEC Field Visit Management is an easy tool for organizations having employees deployed in the field. It provides live tracking of field employee schedules via reports with real-time notifications on exceptions.



#### EMPLOYEE SELF SERVICE:

COSEC Employee Self Service is a comprehensive web-based employee portal that allows COSEC users to monitor and manage all their time-attendance and leave options. Employees and managers can perform related tasks intuitively, reducing a significant amount of time they spend on issues related to attendance and leaves.

## 10 REASONS TO INVEST IN MATRIX COSEC



### MULTIPLE CREDENTIALS

- Biometric - Face Recognition, Palm Vein and Fingerprint (Multispectral and Optical)
- RF Cards - Smart Cards and Proximity Cards



### MULTIPLE CONNECTIVITY

- Wired and Wireless Connectivity
- VoLTE/4G/3G, Wi-Fi, PoE, BLE, Ethernet and USB



### COMPREHENSIVE AND FLEXIBLE ATTENDANCE POLICIES

- User-wise Late-In, Early-Out, Over Time, C-OFF and Absenteeism Policies
- Fully Configurable to Meet Diverse and Disparate Needs



### CUSTOMIZED REPORTS GENERATION

- 300+ Customized Reports using Multiple Filters
- Report Builder Utility for Custom Reports



### EASY INTEGRATION

- Direct Integration with Payroll, ERP, HRM, Active Directory and Third-Party Hardware
- API Integration at Three Levels - Function, Platform, and Device
- Integration using Export, Import, and Sharing Database Tables



### AUTOMATIC ALERTS AND SCHEDULER SERVICES

- Automatic SMS and Email Notifications on Pre-defined Events
- Scheduler Services like Backup, Leave Credit, Report on Email at Configured Time



### WEB BASED MANAGEMENT

- Real-time Monitoring and Control from One Place
- Automatic Data Push from Devices to Central Server
- Host either On-premise or On Cloud



### AWARD WINNING DESIGN AND AESTHETICS

- Many International Awards for Product Engineering and Aesthetics
- Gold Flash PCBs, Touch Sense Keys and Heavy Duty Components for Long Life



### EASY SCALABILITY AND FLEXIBILITY

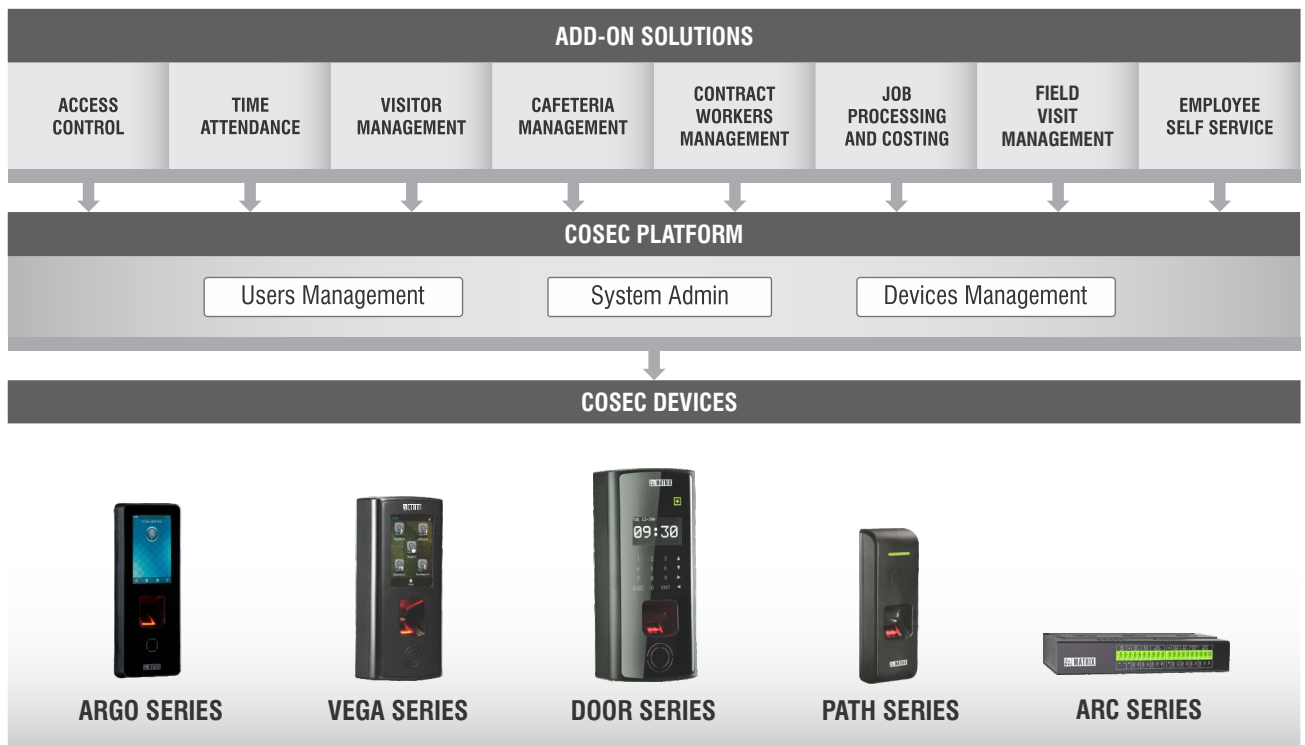
- Scalable and Modular Architecture to Meet Future Requirements
- Flexible and Configurable to Match Organizations' Exact Needs



### PROVEN SOLUTION IN ENTERPRISES

- 15,000+ Satisfied Large Enterprise Customers
- Over Four Million Users on One Lakh Devices
- Installations Across 50+ Countries

## MATRIX COSEC SOLUTION OVERVIEW



Matrix COSEC is an enterprise grade People Mobility Management solution for organizations, covering Time-Attendance, Employee Self Service, Access Control, Visitor Management, Cafeteria Management, Contract Workers Management, Job Processing and Costing and Field Visit Management. Matrix COSEC is an all-integrated solution including hardware devices, software platform and a suite of software application modules.

Matrix COSEC is a flexible, modular and scalable solution designed for large, medium and small enterprises encompassing up to one million users and 65,000 entry points, scattered across 10,000 locations.

Matrix COSEC provides customers with an option of choosing between:

**On-premise solution with COSEC CENTRA**   
and a **Cloud solution with COSEC VYOM** 

# COSEC SOLUTIONS

## APPLICATIONS:

### ACCESS CONTROL

Access Control is always a very critical aspect of an organization's overall security strategy. Access Control objective is simple enough to begin with - protect physical, IP and human assets. Matrix COSEC allows controlling access on all three simultaneous dimensions - user, zone and time by answering the three fundamental questions about who, where and when.



#### ENTERPRISE ACCESS CONTROL



#### ACCESS CONTROL FOR SOHO/ SMB



#### ACCESS CONTROL FOR DATA CENTERS



#### ELEVATOR ACCESS CONTROL



### ENTERPRISE ACCESS CONTROL

Matrix COSEC Access control is a comprehensive and flexible Access Control solution to meet access control needs of organizations, irrespective of their size, layout, locations and timings. Matrix COSEC allows controlling access on three dimensions simultaneously - user, zone and time, by answering three fundamental questions about who, where and when. In addition, a range of value-added features like Anti-pass Back, 2-Person Rule, First-in User, Blocked Users, Door Auto Re-lock, Guard Tour, Man-Trap and Smart Card based Identification ensure foolproof security of physical assets and safety of manpower.

- Time, User, and Zone based Access
- Home Zone and Visit Zone
- VIP Access
- First-In User
- 2-Person Rule
- Man-Trap and Guard Tour
- Door Auto Re-lock
- Dead-Man Zone
- Anti-pass Back
- Do-not-Disturb Zone
- Route based Access
- Occupancy Control
- Smart Identification
- Blocked Users
- Time Stamping
- Who's In

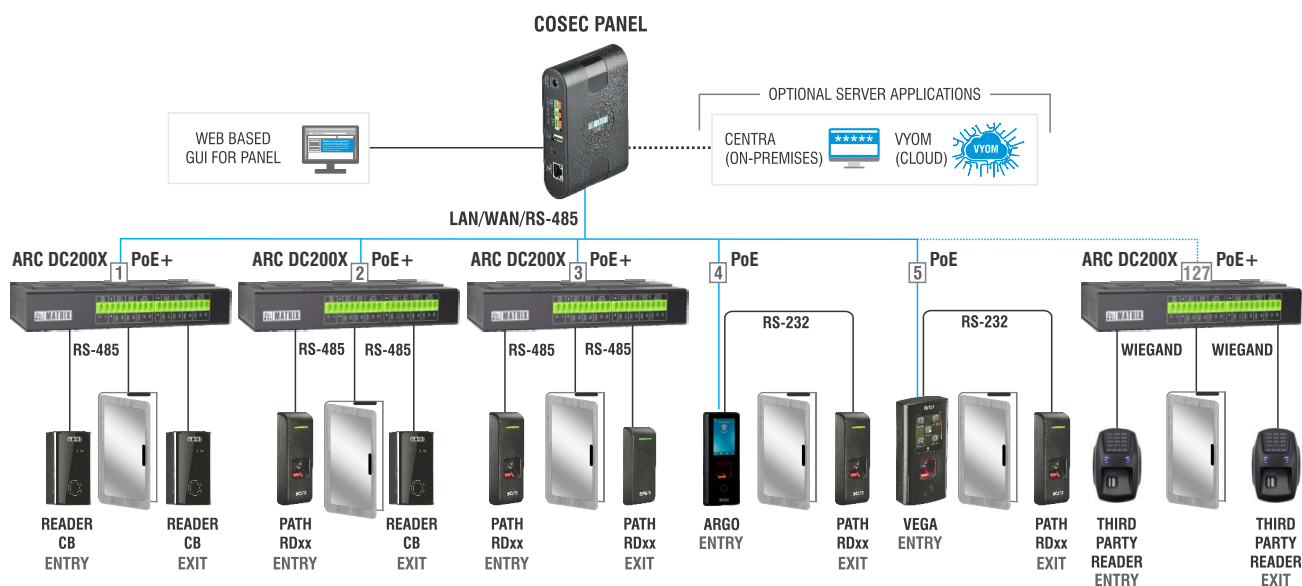


### ACCESS CONTROL FOR SMB/SOHO

Matrix COSEC range of SMB-SOHO access control solutions are specifically designed for medium and small organizations offering robust security, flexibility, simplicity and ease of use. Matrix Access Control solutions not only ensures free flow/route to employees based on their access rights and policies which allow them to engage within the organization but also prevents unauthorized access to secured zones across the premises with no software/server requisite. It supports new-age biometric and mobile as user credentials taking security and ease of use to the next orbit.

- 255 Devices and 25,000 Users
- No Software Required
- Advanced Access Control Features
- SNMP Support for Seamless Integration
- Ethernet, RS-485, RS-232, Wiegand and 3G/4G Connectivity
- Integration with Third Party Readers
- Encrypted Communication

## ACCESS CONTROL SOLUTION

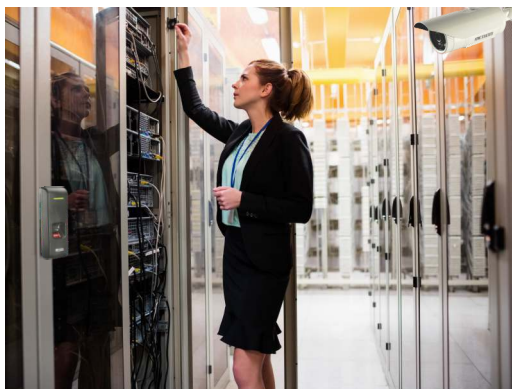


**READER CB:** BLUETOOTH + RF CARD (MIFARE Classic®/EM PROX/iCLASS)

**PATH RDxx:** FINGERPRINT + RF CARD (MIFARE Classic®/EM PROX/iCLASS)

**ARGO:** FINGERPRINT + PIN + BLUETOOTH + RF CARD (MIFARE Classic®/EM PROX/iCLASS)

**VEGA:** FACE + FINGERPRINT + PIN + BLUETOOTH + RF CARD (MIFARE Classic®/EM PROX/iCLASS)



## ACCESS CONTROL FOR DATA CENTERS

The success of any data center depends on how securely it manages sensitive data of multiple clients. Hence, it is very crucial for the data centers to prevent any unauthorized access in data center and rack. Using Matrix solution, data racks are secured biometrically, with records of every access along with its duration. Only an authorized person can access specific racks for the stipulated time using biometric verification.

- Centralized Authentication to Data Centers and Data Racks
- Pre-defined Rack Access
- Integration with Video Surveillance
- SMS/Email Notifications
- Alarm on Door Abnormal
- Central Monitoring through E-map
- Door Status Monitoring



## ELEVATOR ACCESS CONTROL

Matrix offers Elevator based Access Control, which allows access and entry in the elevator using biometric or RF Card credential, only to authorized personnel, at allotted time and assigned floors.

- Controlled Access for 64 Floors in One Elevator
- Integration of IO Controller with Elevator
- Access only to the Defined Floor
- Punch on Matrix Biometric or RFID Device for Verification
- Ideal for Hotels, Corporate Towers and Residential Buildings

## TIME-ATTENDANCE



Matrix COSEC Time-Attendance is an enterprise grade solution for multi-location organizations having complex time-attendance needs. It automates all time-attendance and leave management processes right from recording entries and exits up to report generation and salary processing.

- Late-in/Early-out Policy
- Compensatory Off (C-OFF) Policy
- Overtime Policy and Authorization
- Absenteeism Policy
- Shifts and Schedules
- Automatic Shift Correction
- Holidays and Restricted Holidays
- Manual Entry and Corrections
- Attendance Summary
- Attendance Notifications
- Leave Management
- Report Builder Utility
- Live Head Count of Users
- 200+ Reports and Charts

## VISITOR MANAGEMENT



Matrix COSEC Visitor Management is designed to automate visitor management process in a professional and systematic method without compromising on security, safety, hospitality and productivity. It automates the entire process, right from planning and registering a visitor to the end of their visit. Seamless VMS establishes a secure premise by keeping a log of every person entering and exiting their facility. The details of the visitor, the entry and exit, the host, all such details are stored, thus in the case of an irregular behaviour, the visitor can be tracked easily.

- Visitor Pre-registration
- Visitor Self-registration through Kiosk/ Mobile App/ Web
- Visitor Pass creation
- Visit Approvals and Modifications
- Role based Logins
- Digital Badge
- Notifications
- Visitor Access
- Visitor Escort
- Visitor Dashboard
- Frequent Visitors
- Material Tracking
- Visitor Reports
- Encrypted Communication
- Mobile Application for Seamless VMM

## CAFETERIA MANAGEMENT



Matrix COSEC Cafeteria Management application is a solution that automates the process starting from placing an order to delivery and payment. It tracks items, expedites transactions and reduces food wastage along with preventing accounting errors.

- Customizable Menu
- Menu Schedule
- Auto-selection of Item
- Cashless Transactions
- Refund Requests
- Balance Recharge
- Food Planning
- Blocked Users
- Consumption Status
- Export Data to Payroll and Billing Software
- Informative Reports

## COSEC MIRROR



COSEC MIRROR is an App that allows a user to select menu items from any android device (TV, Tablets) instead of a door controller. The app will display the same UI present in the door controller for cafeteria management. User may first select items from the device and then punch on a biometric device.

- Easy Interpretation of Cafeteria Management
- Selection of Items with One Click through Tablet
- Prevents Queue and Reduces Cafeteria Transaction Time

## CONTRACT WORKERS MANAGEMENT



Matrix COSEC Contract Workers Management solution is specifically designed for organizations dependent on contract workers. COSEC CWM allows managers and contractors to plan and manage their workforce efficiently to improve productivity and significantly reduce labor cost. Organizations can create and define work orders and assign them to contractors, along with completion dates. Contractors can manage workers' details and attendance from the COSEC web portal.

- Worker Master Creation
- Work Order Generation
- Monitor Task Completion Status
- Worker Database
- Work Hours Calculation
- Shift Generation
- Web based Dashboard
- Report Generation
- Export to Third Party Applications
- Labor Enrolment
- Web based Dashboard
- Report Generation
- Labor Pass Creation

## JOB PROCESSING AND COSTING



COSEC Job Processing and Costing application is a web based solution for organizations working on various projects. This solution allows organizations to track and control project cost and progress very efficiently. Organizations can also monitor user-wise time spent on each job and generate project cost reports using various filters.

- Job and Project Process Monitoring
- User/Device-wise Job Assignment
- Central Monitoring
- Inclusion of Independent Jobs
- Job Hours based Payment Policies
- Site Mapping
- Reports

## FIELD VISIT MANAGEMENT



COSEC Field Visit Management is an easy tool to manage organizations having employees deployed in the field from a centrally located personnel. The software provides live tracking of field employee schedules via reports with real-time notifications on exceptions. Admin may set day-to-day work schedules and track the movement of field employees.

- Create Schedules of Individual Users
- Assignment of Daily Work Tasks
- View Field Visit Status
- Live Tracking of Schedule Status via Reports
- SMS and Email Notifications on Exception

## EMPLOYEE SELF SERVICE



Matrix COSEC ESS is a comprehensive web-based portal that allows COSEC users to monitor and manage all their time-attendance and leave options. Employees and managers can access all employees' time-attendance information and perform related tasks intuitively saving a significant amount of time they spend on such issues.

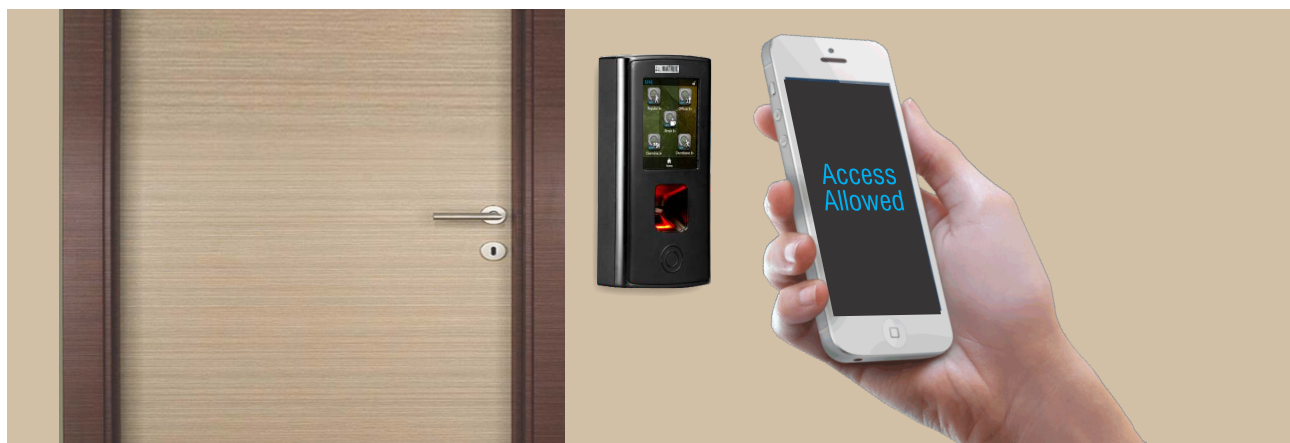
- Mark Attendance
- Check Attendance and Leave Status
- Shift Schedules
- Attendance Correction
- Leave Application and Approval
- Cafeteria Details
- Message Board
- Visitor Pre-registration
- Reporting Officer Self Service
- Add/Edit Personal Details
- User Friendly Dashboard









## FEATURES

FOR EMPLOYEES	FOR REPORTING OFFICERS
View Attendance and Leave Details	Approve Leave/Tour Request
Mark Attendance	Approve Visitor
View Shifts and Schedules	Pre-Registration of Visitors
Pre-Registration of Visitors	Authorize Attendance
View Cafeteria Details	Plan Shifts and Schedules
Apply for Leave/Tour	View Team Attendance
Apply for Attendance Correction	
Edit Personal Information	

## COSEC APTA

Matrix COSEC APTA is a comprehensive mobile based employee portal offering COSEC users to monitor and manage all their time-attendance, leave and access control options. Employees and managers can access all their time-attendance information easily and perform related tasks remotely reducing a significant amount of time they spent on these issues.



 QR Code based Access Control	 Bluetooth based Access Control	 Location Tracking through GPS	 Matrix Face Recognition
 Attendance on Move	 Visitor Pre-registration	 Cafeteria Management	 Visitor Pre-registration
 Leave and Tour Application	 Attendance Correction	 Virtual ID Card	 COSEC Tracker



## MOBILE BASED ACCESS CONTROL - YOUR MOBILE IS YOUR IDENTITY

### QR CODE BASED ACCESS CONTROL



Matrix "Your Mobile is Your Identity" technology offers QR Code based Identification of users to mark their attendance and open doors by simply scanning the QR code from their registered mobile phones.

- Scan QR Code for Identity
- Mobile as User's Credential
- Contactless Identification
- Server Encrypted QR Code
- Customer Created QR Codes
- 24 bit Encryption for Mobile to Server Communication

## BLUETOOTH BASED ACCESS CONTROL



Matrix "Your Mobile is Your Identity" technology offers gesture based identification of users and marks their attendance and opens doors just by twisting of their mobiles in the vicinity of the entry or exit point.

- Twist Mobile to Identify
- Mobile as User's Credential
- Contactless Identification
- Process Multiple Users Simultaneously
- Eliminate RF Cards
- Encrypted Communication
- Beacon Enabled Functionality with Range Up to 10 Meters
- Add Multiple Beacons with Single COSEC Door Controller to Track Location

## PLATFORM:

COSEC Application Server comes with the option of either opting for on-premise solution with COSEC CENTRA or cloud based solution with COSEC VYOM. COSEC PLATFORM is the heart of the entire COSEC solution. In addition to managing an organization, users and devices data, the PLATFORM acts as a bridge between applications and the devices. On the devices side, it facilitates configuration of devices and communicates with site controllers (COSEC PANEL) and door controllers to exchange events and commands and display them live on the monitor screen. On the applications side, the PLATFORM supports enrolling new users and manages organizations and users. Thus, PLATFORM is the foundation for Matrix COSEC applications like Time-Attendance, Access Control, Visitor Management, Cafeteria Management, and others. Developers can build these applications keeping in mind the customer requirements, local news, language and GUI.

In addition to working with Matrix's native applications, COSEC

PLATFORM is designed to work seamlessly with third party applications as well. It provides API functions for developing applications such as Time-Attendance, Visitor Management, Access Control, etc. This layered architecture protects developers from a lower level and tedious tasks such as hardware management, device configuration and real-time communication.

- Web based Application Software
- Centralized Management
- MS SQL or Oracle Database
- Automatic Fingerprint Distribution
- Real-time Monitoring of Devices
- Auto Device Identification
- Modular and Scalable Architecture
- Crystal Reports
- Easy Backup and Restore
- Platform API for Third Party Software Development

## DEPLOYMENT:

Matrix COSEC provides customers with an option of choosing between an On-premise solution and a Cloud solution

## COSEC CENTRA - On-premise People Mobility Management Solutions

Matrix COSEC CENTRA is an enterprise grade, web enabled application server, which controls and manages the entire system from anywhere in the world, at any time. It is the heart of the entire COSEC solution and acts as a bridge between applications and the devices.

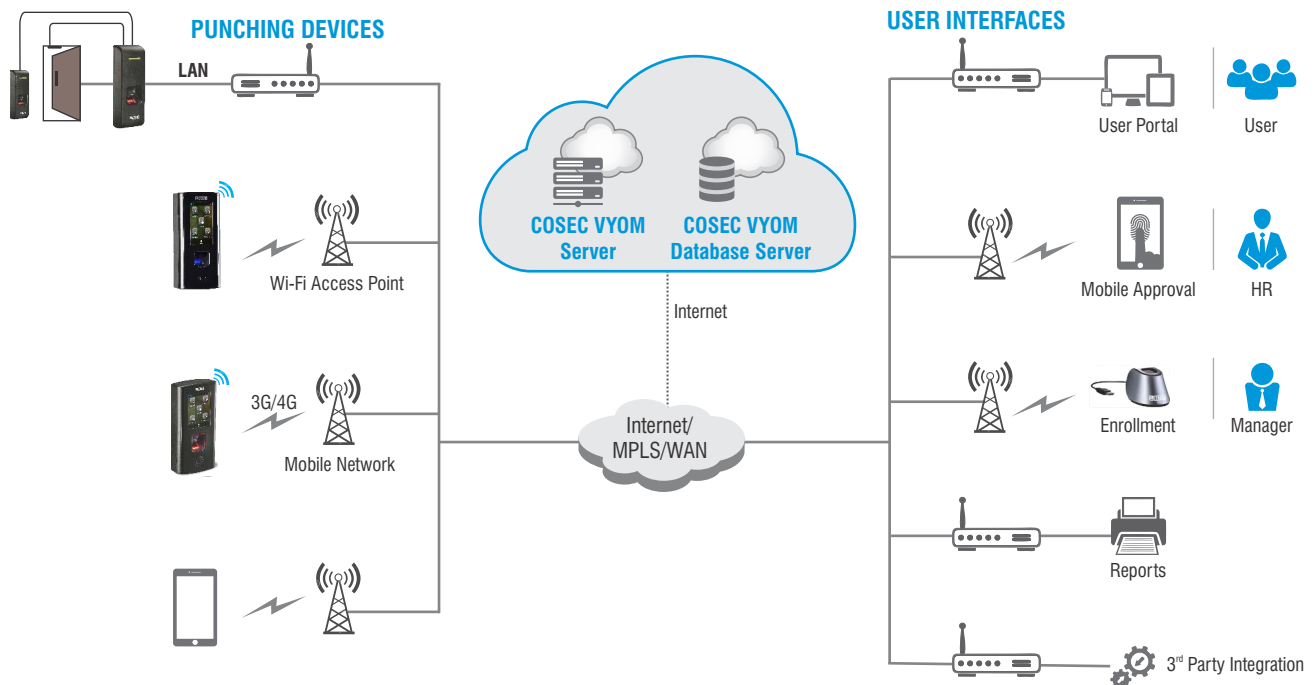
Matrix COSEC CENTRA is available based on User Count, targeted at different business segments. These user-based licenses come with flexibility to add software module-wise users as per your current requirement and can be expanded in future depending on the organizational requirements. Its scalability option allows users to expand the system from 10 users to 1 million users.

Add-on Software Module Users	Add-on Software Module Users as per Requirement								
	COSEC ACM	COSEC TAM	COSEC VMM	COSEC CMM	COSEC CWM	COSEC JPC	COSEC FVM	COSEC ESS	
	10	10	10	10	10	10	10	10	
	100	100	100	100	100	100	100	100	
	1000	1000	1000	1000	1000	1000	1000	1000	
Platform License Users	Add Platform Users on Base Platform								
	COSEC PLT								
	10	USERS MANAGEMENT							
	100	SYSTEM ADMIN							
	1000	DEVICES MANAGEMENT							
Base Platform	One Time Base Platform License for COSEC CENTRA Application								
	PLT	ACM	TAM	VMM	CMM	CWM	JPC	FVM	ESS
	10	5	5	1	5	5	5	5	5

## COSEC VYOM - Cloud based People Mobility Management Solutions

COSEC VYOM is a People Mobility Management solution based on cloud technology that allows users to use application, hardware, and infrastructure as a service. Cloud based time and attendance system addresses solutions to the outlined issues of flexibility, scalability, and efficiency by providing ubiquitous, cost-effective, secure, and on-demand network access.

Smartly designed COSEC VYOM helps different sized businesses achieve more productivity and security. It is a modern age solution providing opportunities to use Software, Data, and Services over the internet from any location on any internet enabled device. With support for one million users and 65,000 entry points, COSEC VYOM is a scalable cloud based time clocking systems



### BENEFIT



**SCALABILITY:** COSEC VYOM is an emerging next generation technology solution for complex organizations having multiple branches spread across geographic regions operating in different time zones.

- Access from Anywhere, Anytime
- On-demand Scalability in Sync with Organization Size
- One Million Users and 65,000 Doors



**FLEXIBILITY:** COSEC VYOM provides flexibility in terms of different wired and wireless connectivity options to satisfy Time-Attendance and Access Control policies of real-world enterprises.

- Unlimited Attendance and Leave Policies
- On-the-Fly Adding Applications
- Multiple Credentials Including Mobile



**INTUITIVE:** Managers/Supervisors/Employees can leverage the benefits of Time-Attendance and Access Control solution with any internet enabled device(s) such as PCs, Macs, Tablets, and Smartphones, from anywhere.

- Tablets and Smartphones, from Anywhere
- Real-time Events and Updates
- Easy Access through any Internet Enabled Device



**COST-EFFECTIVE:** With no initial investment, COSEC VYOM promises achieving more with minimum resources. COSEC VYOM reduces cost of assets needed in the form of hardware, software, and network devices.

- No Capex, Maintenance and Upgrades for IT
- Pay as Per Usage Days
- Free Remote Support



**EASE OF USE:** COSEC VYOM provides ease of use as it eliminates complexities of maintaining the server or storing the data at your place.

- Quick Deployment and Support
- No Software Installation
- 24 x 7 Support



**ENHANCE SECURITY:** With advanced access control features, COSEC VYOM provides solution to protect organizations' assets and power by controlling users' entry based on their credential(s).

- Multi-level Data Encryption and Protection
- Backup, Archival, Retrieval, and Migration
- Access Control for Data Centers and Elevators



**INCREASE PRODUCTIVITY:** COSEC VYOM automates all Time-Attendance and Leave Management processes right from recording entries to report generation. COSEC VYOM is a cloud based Time-Attendance solution that offers superlative range of suppleness in attendance policies, integration and report generation.

- 99.5% Uptime
- Reduced IT Workload and Resources
- Third Party Integration

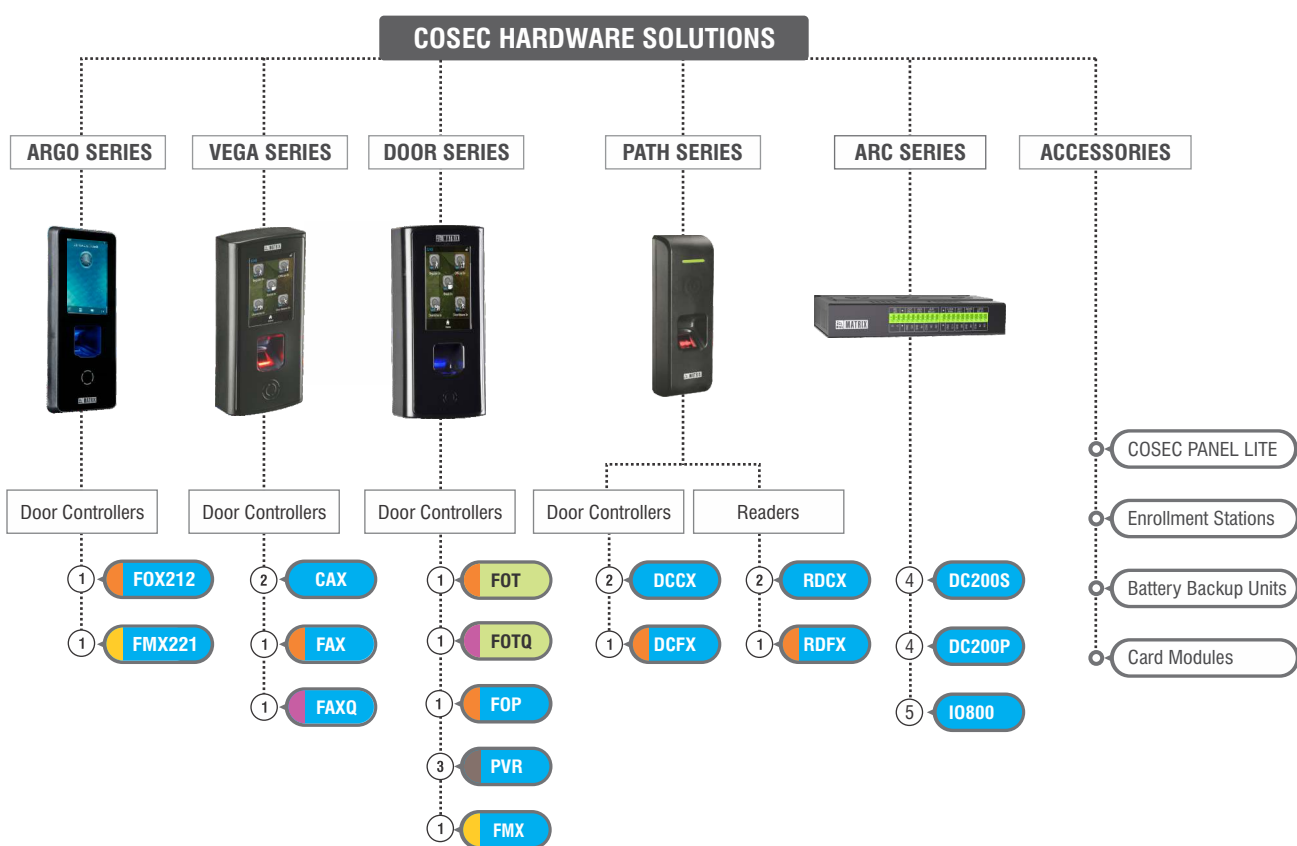


**EASY INTEGRATION:** It provides flexibility to export attendance data by seamless integration with third party payroll system. To secure your premises, COSEC VYOM allows easy integration with third party hardware such as Video Surveillance, Turnstile, Boom Barrier, Tripod, and more.

- Through APIs
- Database to Database
- Offline Export
- Aux-In and Aux-Out Ports

## COSEC HARDWARE SOLUTIONS

Matrix COSEC hardware comprise of families of door controllers, readers and accessories. These products have won many international awards for their aesthetics and engineering. They are specifically designed for demanding enterprise applications using cutting-edge technologies and components for reliable performance for years.



Only Time-Attendance  
Access Control and Time-Attendance

Suprema Optical Sensor  
Multispectral Fingerprint Sensor  
Fujitsu Palm Vein Contactless Sensor  
With STQC Certified Sensor

- ① Fingerprint and RFID Support
- ② Only RFID Support
- ③ Palm Vein Support
- ④ Two Door Controller
- ⑤ Multiple Applications

### Types of Card:

**X** - E, M, I Card Support,  
**E** - EM Prox,  
**M** - MIFARE Classic® Smart,  
**I** - HID iCLASS

## COSEC DOOR CONTROLLERS

COSEC door controllers are the front-end terminals that people use during entry and exit. Door controllers read biometric credentials – palm vein, fingerprint, or RF cards to log each entry/exit and control door locking. Door controllers are connected with the COSEC server or site controller. They store all user access information and send entry/exit details to the COSEC server in real-time. Door controllers can monitor and control additional readers, door locks, and auxiliary input and output ports. The COSEC door controllers are divided into five series as mentioned below:



Awarded with  
India Design  
Mark 2019



### COSEC ARGO

COSEC ARGO series door controllers are performance and engineering wonders with emphasis on productivity and security for modern organizations. COSEC ARGO devices are the next generation door controllers for serious deployments of Access Control and Time-Attendance applications. The intelligent workhorse is designed to meet aesthetics, technology and harsh environment application requirements of the organizations.

- IPS Display with Gorilla Glass
- Powerful ARM Processor - 2x Faster Identification
- Fingerprint (Optical and Multispectral), RFID (Smartcards and Proximity) and PIN
- IP65 and IK08 for Outdoor Applications
- Bluetooth, Wi-Fi, PoE, Ethernet, GSM/VoLTE (through USB Dongle)
- Wall Mount and Flush Mount Design
- 50,000 Users and 500,000 Events



### COSEC VEGA

VEGA series door controllers are engineered with careful blend of aesthetics, size, connectivity, reliability, and ease of use for modern enterprises. The VEGA devices are a perfect fit for Access Control and Time-Attendance solution required by modern organizations.

- Optical Fingerprint Reader
- Smartcards and Proximity Cards
- 3.5" Touch Sense Color LCD
- IP65 for Outdoor Applications
- Power over Ethernet (PoE)
- Ethernet, Wi-Fi and 3G/4G/LTE
- 500,000 Events Storage
- COSEC VEGA FAXQ Available with STQC Certified Sensor



### COSEC DOOR PVR

COSEC DOOR PVR is a contactless technology that reads internal vascular pattern of the user palm and give accurate results to provide utmost security and hygiene. These patterns are unique to each individual and exists underneath the skin layer so they cannot be forged, thereby making it more secure than any other biometric technology.

- Contactless Reader
- Palm Vein, RF Card, and PIN Credentials
- 20,000 User Templates
- 100,000 Event Storage
- Ethernet, Wi-Fi and 3G/4G/LTE
- Detachable Hand Guide for COSEC DOOR PVR
- Standard Matrix Hand Guide for COSEC DOOR PVR ES



### COSEC DOOR FMX10

COSEC DOOR FMX makes use of advance multispectral fingerprint sensor. It reads surface and subsurface of a finger and gives very clear and strong image. Furthermore, it reads subsurface layer even if the surface layer is not readable due to finger being dirty, dry, or oily, having poor ridge image, or other environmental problems. This unique identification process outperforms all other fingerprint sensors and offers robust and reliable biometric information of the user.

- Multispectral Fingerprint Reader
- Fingerprint and RFID card
- Interactive GUI with 4.3" TFT Touch Screen
- 500,000 Transactions and 50,000 Users
- PoE, Ethernet, Wi-Fi, and 3G/4G (on USB)



## COSEC DOOR FOP, COSEC DOOR FOT

Winner of the coveted iF award for its superior design, DOOR series controllers are versatile devices designed for reliability, modularity, and performance. These workhorses come in multiple variants specifically targeted at Time-Attendance and Access Control applications.

- Optical Fingerprint Reader
- Smart Card and Proximity Cards
- 128\*64 Dot Matrix Display
- Touch Sense Keypad
- Ethernet, 3G/4G/LTE and USB Port
- 500,000 Event Storage
- COSEC DOOR FOPQ and COSEC DOOR FOTQ Available with STQC Certified Sensor



## COSEC PATH

Compact, robust, and cost-effective PATH series door controllers blend in with any modern building architecture and design. These devices assure reliable and long term performance as sentries at the building gates and doors for Access Control application.

- Optical Fingerprint Reader
- Smartcards and Proximity Cards
- IP65 for Outdoor Applications
- Power over Ethernet (PoE)
- Power to Door Lock over PoE
- Elegant and Compact
- 9,600 Fingerprint Storage
- 50,000 Events Storage



## COSEC ARC DC200

Matrix COSEC ARC DC200 is an intelligent controller with Wi-Fi and PoE+ for Access Control applications. This smart controller can control two doors over Wiegand/RS-485/RS-232 without need of external power supply.

- Two Readers and Two Exit Switches
- Wi-Fi, PoE+, BLE and Wiegand
- Third party Wiegand Readers
- SSL Enabled
- 50,000 Users and 500,000 Events
- Wall Mount and Din-Rail Mounting
- BIS, CE, FCC, UL Certified



## COSEC ARC IO800

COSEC ARC IO800 is an input and output controller to control multiple inputs and outputs of third party devices to perform multiple applications.

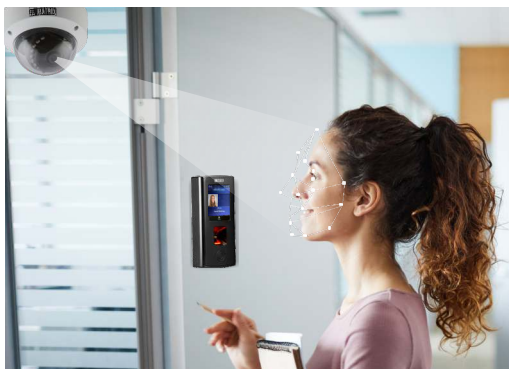
- Eight Input Ports with Four State Supervised Inputs
- Eight Output Ports with Form C Dry Contact Relays
- Power over Ethernet (PoE)
- Ethernet and/or RS-485 Connectivity
- Elevator Control
- LED Indication for Device and Network Status Respectively

## COSEC FACE RECOGNITION - Where Flexibility Meets Performance

Matrix COSEC Face Recognition solution is designed to meet distinctive user identification needs of the organizations. Its powerful user identification algorithm with deep learning technology identifies user precisely and swiftly even in challenging environment

conditions. Backed with powerful application software, Matrix COSEC FR is an ideal solution for Time-Attendance and Access Control applications to enhance productivity or security for new-age organizations.

### COSEC Device based Face Recognition Solution



Matrix COSEC Device based (COGNIFACE) Facial Recognition is a unique solution with IP Camera and COSEC door controller to offer very accurate user identification even in challenging working conditions for time-attendance and access control applications.

- IP65 Door Controllers with Tamper Detection
- Flexibility to Mount Camera
- Accurate Identification in Low Light
- Sony STARVIS Camera Sensor
- User Identification in <1 Sec

### COSEC MODE



COSEC MODE is an android application used in tablet for Face Recognition without any need of biometric device for time-attendance and access control applications in the organization.

- Plug and Play with Android Application
- Eliminates Reader Cost
- 1: N Authentication
- Encrypted Communication
- Easy Deployment and Simple to Use



## COSEC DOOR CONTROLLERS SELECTION GUIDE

SERIES	ARGO		VEGA			DOOR						PATH	
MODEL	FOX212	FMX212	FAX	CAX	FAXQ	PVR	FMX	FOP	FOT	FOPQ	FOTQ	DCFX	DCCX
Fingerprint Sensor (Optical)	•		•					•	•			•	
Fingerprint Sensor (Multispectral)		•					•						
Fingerprint Sensor (STQC Certified)					•					•	•		
Palm Vein Sensor						•							
RFID Card Reader	•	•	•	•	•	•	•	•	•	•	•	•	•
Touch Screen LCD (4.3")							•						
Touch Screen LCD (3.5")	•	•	•	•	•								
128*64 Dot Matrix Display						•		•	•	•	•		
Touch Sense Keys						•		•	•	•	•		
Ethernet	•	•	•	•	•	•	•	•	•	•	•	•	•
RS-485								•				•	•
USB Port for Data Transfer	•	•	•	•	•	•	•	•	•	•	•		
USB Port for Communication	•	•	•	•	•	•	•	•	•	•	•		
Built-in Wi-Fi	•	•	•	•	•	•	•	•	•	•	•		
Power over Ethernet (PoE)	•	•	•	•	•		•					•	•
Event Storage (50,000)												•	•
Event Storage (100,000)						•							
Event Storage (500,000)	•	•	•	•	•		•	•	•	•	•		
External Reader	•	•	•	•	•	•	•	•		•		•	•
Exit Switch	•	•	•	•	•	•	•	•		•		•	•
Door Lock	•	•	•	•	•	•	•	•		•		•	•
Auxiliary Input Port			•	•	•	•	•	•		•			
Auxiliary Output Port			•	•	•	•	•	•		•			
Tamper Detection	•	•	•	•	•	•	•	•	•	•	•	•	•
Buzzer	•	•	•	•	•	•	•	•	•	•	•	•	•
LED Indication						•		•	•	•	•	•	•
IP65	•	•	•	•	•							•	•
IK08	•	•											

**X** - E, M, I, P Card Support    **E** - EM Prox,  
**M** - MIFARE Classic® Smart    **I** - HID iCLASS

• Built-in

• COSEC CPM Required

• External Wi-Fi Dongle Required

## COSEC EXIT READERS

### COSEC READER CB

COSEC READER CB is a compact reader used with COSEC door controllers or third party controllers to monitor entry and exits for access control applications.

- MIFARE®, EM Prox, HID iCLASS (CPM Module is Required)
- Bluetooth, RS-485, RS-232 and Wiegand
- LED and Buzzer
- CE, BIS, FCC, RoHS

Matrix COSEC Exit Readers are used with COSEC door controllers to monitor user exits. They come in two variants – Fingerprint based and Card based. Elegant design and IP65 make them suitable for use in demanding environments.

- Fingerprint and Card based
- Tri Color LED
- Tamper Detection
- IP65 for Outdoor Usage
- RS-232 and RS-485 Interface
- Buzzer

### COSEC PANEL LITE

COSEC PANEL LITE manages multiple controllers and acts as a bridge between the controllers and the central COSEC server. They are responsible for synchronizing all door controllers and implementing advanced access control features.

- Ethernet and RS-485
- USB for Wi-Fi, 3G/4G/LTE and Data Transfer
- Auxiliary Input and Output Ports
- Advance Access Control Features
- 500,000 Events Storage
- Controls 255 Doors and 25,000 Users

#### COSEC PANEL LITE

USE	STANDALONE MODE	NETWORK MODE
For	SMB, SME and SOHO	Enterprises and SME
Location	Single Location	Multiple Locations with COSEC CENTRA
Software	Built-in with COSEC PANEL LITE	Web based with COSEC CENTRA
Capacity	Connect up to 255 Doors with COSEC PANEL	Connect up to 65,000 Doors with COSEC CENTRA
Users	25,000 Users with COSEC PANEL	One Million Users with COSEC CENTRA

## COSEC ACCESSORIES

### COSEC ENROLL

COSEC ENROLL is a desktop based enrolment station to enroll palm and fingerprint from a single location. COSEC ENROLL, along with the enrolment software, allows HR to enroll new employees in a simple manner.

- Palm Vein Enrolment Station
- Optical Fingerprint Enrolment Station
- Multispectral Fingerprint Enrolment Station
- Fingerprint Verification
- Comprehensive Software
- Finger Image Quality Check during Enrolment

### COSEC CPM

COSEC CPMs are pluggable card reader modules inserted in the COSEC DOOR and VEGA series controllers. Six different card reader modules are available to support both proximity and smart cards.

#### Card Support:

- High Frequency (13.56 MHz): MIFARE Classic® 1k, MIFARE Classic® 4k, HID iCLASS 2k/2, HID iCLASS 16k/2, HID iCLASS 16k/16

- Low Frequency (125 KHz): EM Prox

PRODUCT	TECHNOLOGY	SUPPORTED DOOR CONTROLLERS
COSEC VEGA CPM EM PROX	Proximity	COSEC VEGA Series
COSEC VEGA CPM MIFARE Classic® SMART	Smart Card	COSEC VEGA Series
COSEC VEGA CPM HID iCLASS	Smart Card	COSEC VEGA Series
COSEC CPM EM PROX	Proximity	COSEC DOOR Series
COSEC CPM MIFARE Classic® SMART	Smart Card	COSEC DOOR Series
COSEC CPM HID iCLASS	Smart Card	COSEC DOOR Series

## COSEC BATTERY BACKUP UNITS



### COSEC VEGA BBU

It is a power supply battery backup for the COSEC VEGA series door controllers which is useful at remote sites, where connectivity is an issue.



### COSEC PATH BBU

It is a power supply battery backup for COSEC PATH series door controllers which is highly useful for mobile application and remote areas where there is scarcity of connectivity and power.



### COSEC PSBB12V

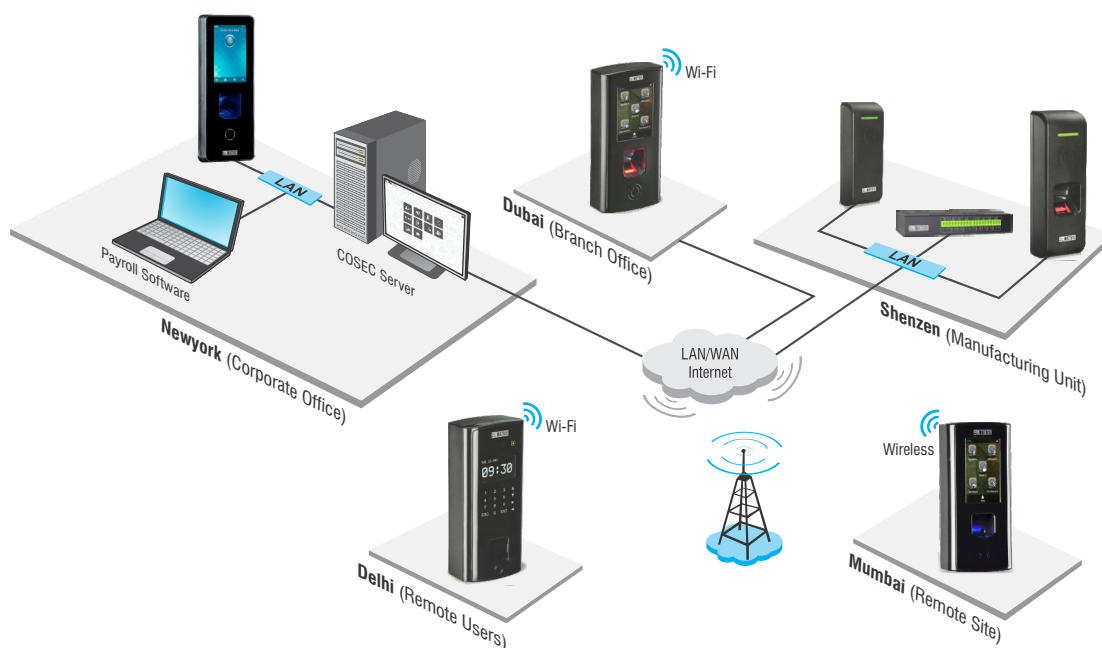
It is a COSEC power supply with battery backup which is used for supplying power to the door controller.

- Supply Power with Battery Backup to Door Controllers
- Power Supply for Door Lock and Exit Readers

## COSEC DEPLOYMENT IN MULTI-LOCATIONS

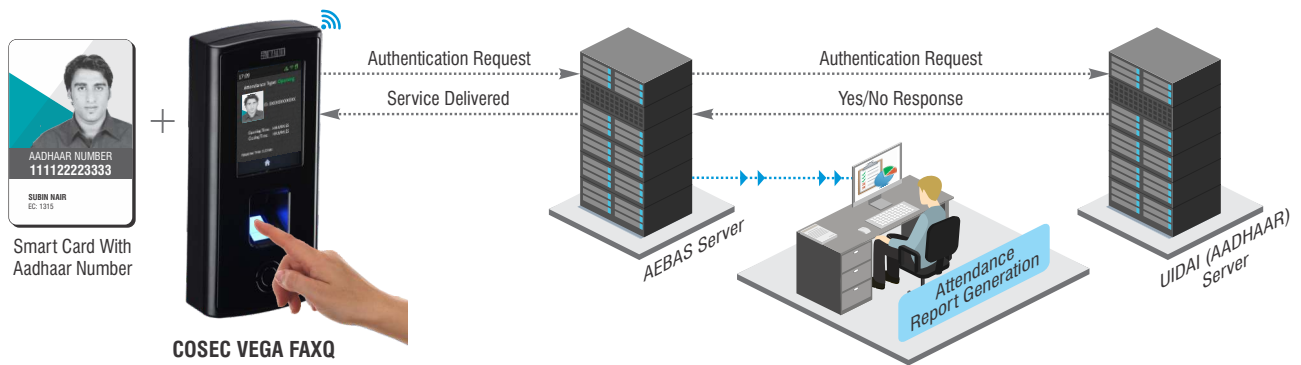
The image below shows COSEC deployment in a large enterprise having a corporate office, manufacturing unit, branch offices and remote sites located at different geographical locations. COSEC server is installed at the corporate office to manage attendance and access control of all employees on a central level. COSEC door controllers installed at these locations are connected with COSEC

using available connectivity (VPN, WAN, LAN, Wi-Fi, 3G/4G/LTE). COSEC door controllers record user attendance and control access using biometric or RF cards. It sends real-time entry/exit events to the COSEC PLATFORM. COSEC processes these events to generate attendance/leave data and sends the same to payroll/ERP for salary processing.



# AADHAAR ENABLED BIOMETRIC ATTENDANCE SYSTEM:

## AUTHENTICATION PROCESS



Matrix introduces the first embedded Linux based Aadhaar Enabled Biometric Attendance Device registered on AEBAS Server - COSEC VEGA FAXQ. It authenticates the user using their Aadhaar number stored in the smart card and fingerprint in less than 1.5 sec. This integrated device offers unique benefits in terms of reliability, convenience, speed, and data security. Its IP65 design, smart card, multi-language, PoE, wireless connectivity, and touchscreen makes it a foolproof Time-Attendance solution for Government organizations.

AEBAS is a system of managing attendance of Indian government employees through Aadhaar authentication. Matrix offers the first embedded Linux based Aadhaar enabled biometric device registered on AEBAS Server - COSEC VEGA FAXQ. It offers unique advantages in terms of connectivity, technology, usage environment, and ease of use. This device supports fingerprint as well as MIFARE® smart card as credential. It supports both Hindi as well as English language with auto selectable mode.

## BENEFITS



### RELIABILITY

Designed for Attendance Management on a Linux Platform for Long Term Consistent Performance



### CONVENIENCE

Reads AADHAAR Number from the Smart Card Directly and Eliminates Manual Entry



### SPEED

Identification within 1.5 Second



### CONNECTIVITY

LAN with PoE, Wi-Fi, and 3G/4G Options to Connect with the AEBAS Server

## FEATURES:



### CREDENTIALS

- Fingerprint
- Smart Card



### LANGUAGES

- English
- Hindi
- Regional Languages as per Request



### CONNECTIVITY

- Ethernet with PoE
- 3G/4G/LTE
- Wi-Fi
- USB



### CERTIFICATIONS

- STQC
- BIS
- CE
- RoHS
- FCC



### AUTHENTICATION MODES

- Smart Card + Finger
- Keypad + Finger



### DISPLAY

- 3.5" Touch Screen
- Display User Photo



### IP65 CERTIFIED

- Protection from Dust and Liquid

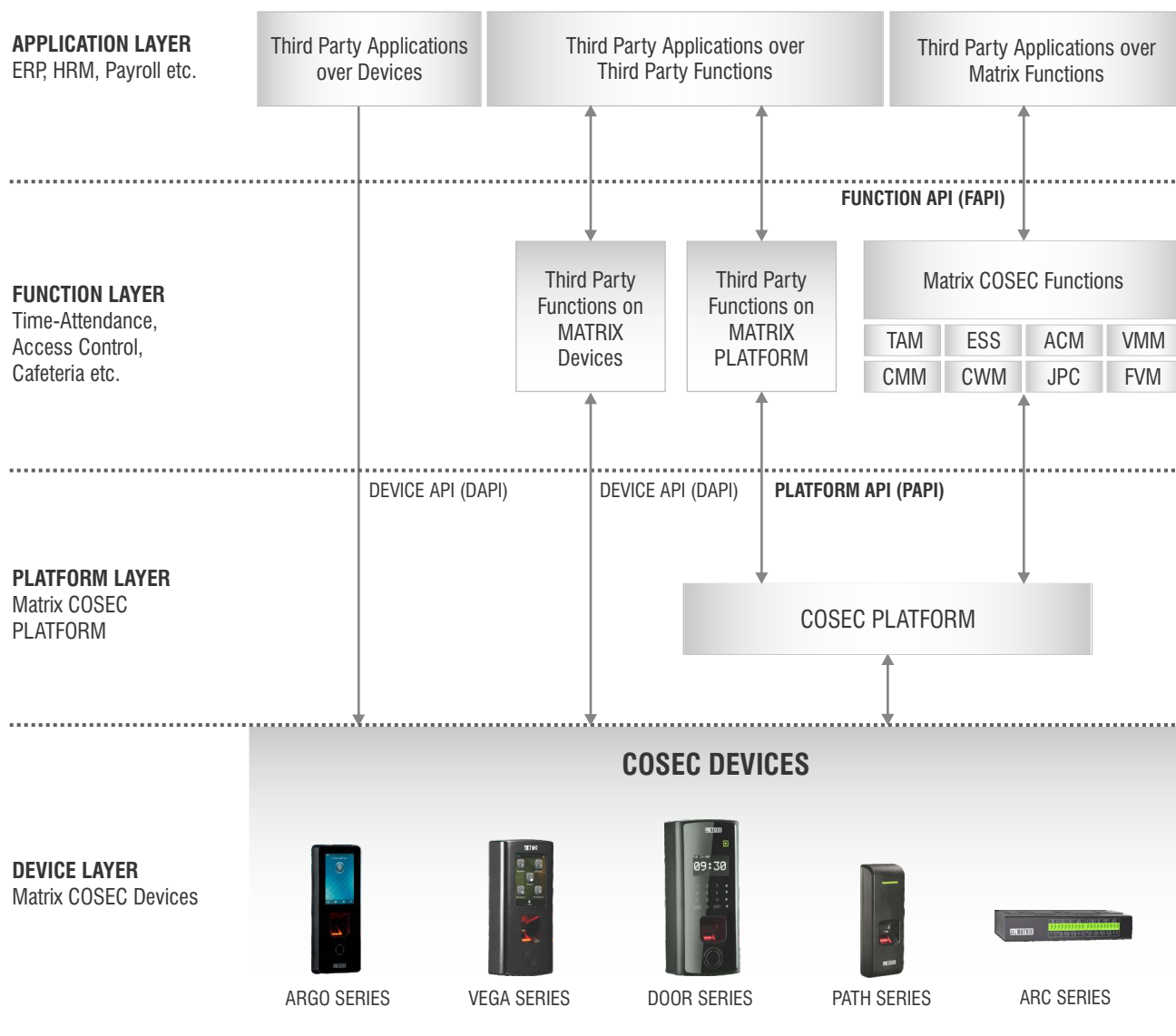


### EMBEDDED LINUX DEVICE

- Immune to Viruses and Malware

## MATRIX COSEC INTEGRATION

Matrix COSEC is designed in a way that it can be integrated with various third party applications software such as ERP, Payroll, HRM, etc. for salary generation using database to database, API and customized export templates methods. COSEC integration is shown in the image below:



### DEVICE LEVEL INTEGRATION

Matrix COSEC devices come ready with Device API for third party application developers, which allow them to develop their applications using Matrix COSEC devices. Matrix COSEC Device

APIs (DAPI) allow other third party applications to communicate directly with the COSEC devices without requiring COSEC Server.

### PLATFORM LEVEL INTEGRATION

Many application developers need application ready APIs. They expect the hardware vendors to manage device configuration, communication, enrollment, and other lower level tasks. This saves them from the complexity of physical interfaces, network management, communication, device configuration, template distribution, etc. For such developers, Matrix COSEC offers Platform APIs (PAPI). Matrix COSEC manages all the lower level tasks

preventing the application developers from performing the tedious lower level software engineering and offers them application ready interfaces for simple and quick programming. Using PAPI, they can build their applications like Time-Attendance, Access Control, Visitor Management, Cafeteria Management, Contract Workers Management, and others by integrating them with COSEC.

### FUNCTION LEVEL INTEGRATION

This is the highest level of interface Matrix COSEC offers for application to application integration. Using Function APIs (FAPI), Matrix COSEC functions like Time-Attendance can be integrated with

other third party applications such as payroll, ERP, HRMS, and CRM. Matrix COSEC is integrated with many widely popular applications like SAP, Oracle, Microsoft Dynamics NAV/AX, Tally, and others.

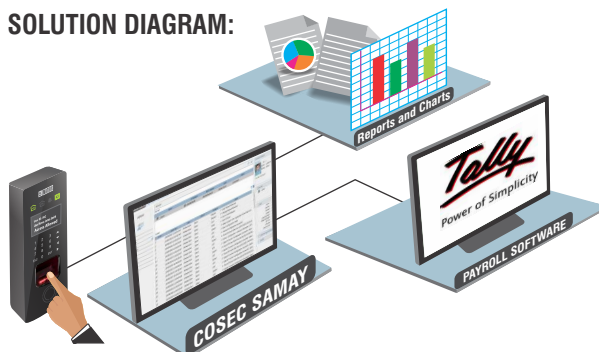
## COSEC SAMAY - Time-Attendance for SOHO

Matrix COSEC SAMAY is a professional Time-Attendance solution specially designed for small organizations. COSEC SAMAY manages the diverse requirements of systematic yet flexible timings with user-wise attendance, shifts, and leave policies. Its human-like

intelligence calculates attendance and leaves, and integrates seamlessly with payroll systems. Matrix COSEC SAMAY dramatically improves productivity and discipline of the organization.



### SOLUTION DIAGRAM:



### FEATURES



Desktop based Application



Up to 100 Users



Up to 2 Devices



MS Excel Reports



Tally Integration



Free Software



Download from Website



Work with COSEC DOOR FOT/FOP/VEGA

### COSEC SAMAY DIFFERENTIATORS

FEATURES	MATRIX COSEC SAMAY	BENEFITS
User-wise Timings	User-wise Attendance, Late-In, Early-Out-Off and Overtime	Adapt to the Organization's Real Needs
Flexible Shifts	Multiple Shifts and Shift Patterns	Allocate Manpower for Maximum Efficiency
Leaves and Holidays	Various Leave Types, Balance Tracking and Encashment	Match Organization's Exact Leaves and Holidays
Overtime	User-wise Overtime Policy and Automatic Calculation	Save time, Increase Accuracy and Reduce Cost
Online Events Recording	Auto Push Events from device to Software with User Photo	Prevent Human Interventions, Errors and Manipulation
Live Dashboard	Live Status of Attendance, Device, Shifts and Holidays in a Single Window	Monitor Manpower Status for Better Control and Faster Decisions
Reports and Charts	Customized Reports in Excel and Graphical Charts with Filters	Easy Data Interpretation for Quick Decision Making
Payroll Integration	Direct Integration with Tally and other Payroll	Reduce Manual Work and Eliminate Errors/Manipulation
Award Winning Design	iF and Red Dot International Awards for Product Engineering and Aesthetics	Improve Aesthetics and Ease-of-Use
Sturdy Hardware	Gold Flash PCBs, Touch-Sense Keys, Scratch Proof Plastic and Heavy Duty Components	Reliability and Long Life
Multiple Connectivity	Ethernet, Wi-Fi, Mobile Broadband (3G/2G) and Power over Ethernet (PoE)	Reduce Wiring Cost and Improve Network Reliability

## ORDERING INFORMATION

DOOR CONTROLLERS	
COSEC ARGO FOX212	Fingerprint and Card based Door controller with Gorilla Glass, Touchscreen, IP65, IK08, Wi-Fi, and 3G/4G Connectivity Option
COSEC ARGO FMX212	Multispectral Fingerprint and Card based Door controller with Gorilla Glass, Touchscreen, IP65, IK08, Wi-Fi, and 3G/4G Connectivity Option
COSEC VEGA FAX	Fingerprint and Card based Door Controller with Touchscreen, IP65, Wi-Fi and 3G/4G Connectivity Option
COSEC VEGA CAX	Card based Door Controller with Touchscreen, IP65, Wi-Fi and 3G/4G Connectivity Option
COSEC VEGA FAXQ	STQC Certified Fingerprint Sensor and Card based Door Controller with Touchscreen, IP65, Wi-Fi and 3G/4G Connectivity Option
COSEC DOOR PVR	Palm Vein and Card based Door Controller with Detachable Hand Guide, Wi-Fi, LCD, Keypad and 3G/4G Connectivity Option
COSEC DOOR PVR ES	Palm Vein and Card based Door Controller with External Hand Guide, Wi-Fi LCD, Keypad and 3G/4G Connectivity Option
COSEC DOOR FMX	Multispectral Fingerprint and Card based Door Controller with Touchscreen, Wi-Fi and 3G/4G Connectivity Option
COSEC DOOR FOP	Fingerprint and Card based Door Controller with LCD, Keypad and USB
COSEC DOOR FOPQ	STQC Certified Fingerprint Sensor and Card based Door Controller with LCD, Keypad and USB
COSEC DOOR FOT	Fingerprint and Card based Time-Attendance Terminal with LCD, Keypad and USB
COSEC DOOR FOTQ	STQC Certified Fingerprint Sensor and Card based Time-Attendance Terminal with LCD, Keypad and USB
COSEC READER CB	Compact Reader with Bluetooth, RS-485, RS-232 and Wiegand
COSEC PATH DCFX*	Fingerprint and in-Built Card based Door Controller with PoE and IP65
COSEC PATH DCCX*	In-Built Card based Door Controller with PoE and IP65
COSEC ARC DC200P	Two Door Panel with Wi-Fi, PoE+ , BLE and Wiegand for Access Control Application
COSEC ARC DC200S	Two Door Panel with PoE+ and Wiegand for Access Control Application

READERS	
COSEC READER CB	Compact Reader with Bluetooth, RS-485, RS-232 and Wiegand
COSEC PATH RDFX*	Fingerprint and Card based Exit Reader with IP65
COSEC PATH RDCX*	Card based Exit Reader with IP65

ACCESSORIES	
COSEC PANEL LITE	Control Panel to Support Multiple Door Controllers for Advance Features
COSEC ARC IO800	8 Door input and output controller to control inputs and outputs of third party devices to perform multiple applications.
COSEC ENROLL PALM	USB based Palm Enrolment Station
COSEC ENROLL FINGER	USB based Fingerprint Enrolment Station
COSEC ENROLL FMX	USB based Multispectral Fingerprint Enrolment Station
COSEC PSBB12V	Power Supply Battery Backup for Door Controllers
COSEC PATH BBU	Power Supply Battery Backup for PATH Series Door Controllers
COSEC VEGA BBU	Power Supply Battery Backup for VEGA Series Door Controllers
COSEC VEGA CPM EM PROX	EM Proximity Card Personality Reader Module for VEGA Series Door Controller
COSEC VEGA CPM MIFARE Classic® SMART	MIFARE Classic® Smart Card Personality Reader Module for VEGA Series Door Controller

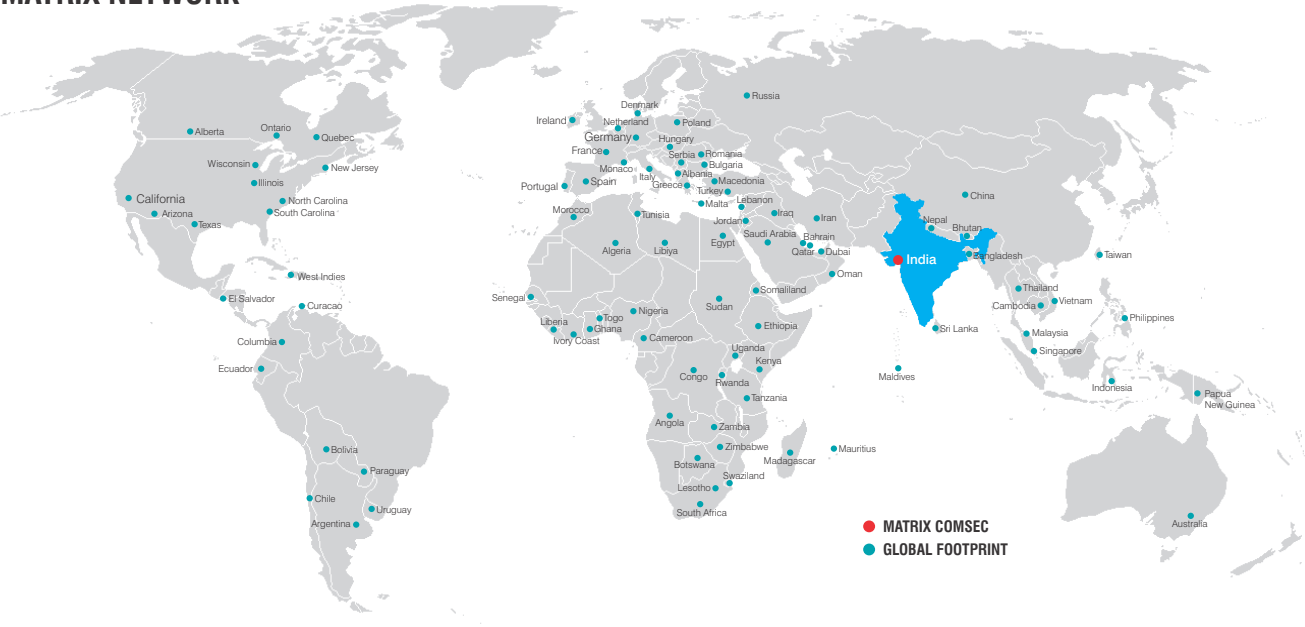
COSEC VEGA CPM HID iCLASS	HID iCLASS Smart Card Personality Reader Module for VEGA Series Door Controller
COSEC CPM EM PROX	EM Proximity Card Personality Reader Module
COSEC CPM MIFARE Classic® SMART	MIFARE Classic® Smart Card Personality Reader Module
COSEC CPM HID iCLASS	HID iCLASS Smart Card Personality Reader Module

\*X- E, M, I where    **E** - EM Prox    **M** - MIFARE Classic® Smart    **I** - HID iCLASS

COSEC CENTRA SOFTWARE	
COSEC CENTRA PLATFORM	Base Platform License for COSEC CENTRA
COSEC CENTRA PLT10/ 100/ 1000	10/ 100/ 1000 Platform Users License for COSEC CENTRA
COSEC CENTRA ACM10	10 Access Control Users License for COSEC CENTRA
COSEC CENTRA ACM100	100 Access Control Users License for COSEC CENTRA
COSEC CENTRA ACM1000	1000 Access Control Users License for COSEC CENTRA
COSEC CENTRA TAM10	10 Time - Attendance Users License for COSEC CENTRA
COSEC CENTRA TAM100	100 Time - Attendance Users License for COSEC CENTRA
COSEC CENTRA TAM1000	1000 Time - Attendance Users License for COSEC CENTRA
COSEC CENTRA VMM10	10 Visitor Management Users License for COSEC CENTRA
COSEC CENTRA VMM100	100 Visitor Management Users License for COSEC CENTRA
COSEC CENTRA VMM1000	1000 Visitor Management Users License for COSEC CENTRA
COSEC CENTRA CMM10	10 Cafeteria Management Users License for COSEC CENTRA
COSEC CENTRA CMM100	100 Cafeteria Management Users License for COSEC CENTRA
COSEC CENTRA CMM1000	1000 Cafeteria Management Users License for COSEC CENTRA
COSEC CENTRA CWM10	10 Contract Workers Management Users License for COSEC CENTRA
COSEC CENTRA CWM100	100 Contract Workers Management Users License for COSEC CENTRA
COSEC CENTRA CWM1000	1000 Contract Workers Management Users License for COSEC CENTRA
COSEC CENTRA JPC10	10 Job Processing and Costing Users License for COSEC CENTRA
COSEC CENTRA JPC100	100 Job Processing and Costing Users License for COSEC CENTRA
COSEC CENTRA JPC1000	1000 Job Processing and Costing Users License for COSEC CENTRA
COSEC CENTRA FVM10	10 Field Visit Management Users License for COSEC CENTRA
COSEC CENTRA FVM100	100 Field Visit Management Users License for COSEC CENTRA
COSEC CENTRA FVM1000	1000 Field Visit Management Users License for COSEC CENTRA
COSEC CENTRA ESS10	10 Employee Self Service Portal Users License for COSEC CENTRA
COSEC CENTRA ESS100	100 Employee Self Service Portal Users License for COSEC CENTRA
COSEC CENTRA ESS1000	1000 Employee Self Service Portal Users License for COSEC CENTRA
COSEC CENTRA FR10	10 Facial Recognition Users for COSEC CENTRA
COSEC CENTRA FR100	100 Facial Recognition Users for COSEC CENTRA
COSEC CENTRA FR1000	1000 Facial Recognition Users for COSEC CENTRA
COSEC CENTRA AUP10	10 Annual Upgradation license Users for COSEC CENTRA
COSEC CENTRA AUP100	100 Annual Upgradation license Users for COSEC CENTRA
COSEC CENTRA AUP1000	1000 Annual Upgradation license Users for COSEC CENTRA

COSEC VYOM SOFTWARE	
COSEC VYOM TENANT	COSEC VYOM Tenant License
COSEC VYOM PLATFORM UD1K/ 10K/ 100K/ 1000K	Application Software Platform for 1,000/ 10,000/ 100,000/ 1,000,000 User Days for COSEC VYOM
COSEC VYOM ACM UD1K/ 10K/ 100K/ 1000K	Access Control for 1,000/ 10,000/ 100,000/ 1,000,000 User Days
COSEC VYOM ACM UD1K	Access Control for 1,000 User Days
COSEC VYOM ACM UD10K	Access Control for 10,000 User Days
COSEC VYOM ACM UD100K	Access Control for 100,000 User Days
COSEC VYOM ACM UD1000K	Access Control for 1,000,000 User Days
COSEC VYOM TAM UD1K	Time-Attendance for 1,000 User Days
COSEC VYOM TAM UD10K	Time-Attendance for 10,000 User Days
COSEC VYOM TAM UD100K	Time-Attendance for 100,000 User Days
COSEC VYOM TAM UD1000K	Time-Attendance for 1,000,000 User Days
COSEC VYOM VMM UD1K	Visitor Management for 1,000 User Days
COSEC VYOM VMM UD10K	Visitor Management for 10,000 User Days
COSEC VYOM VMM UD100K	Visitor Management for 100,000 User Days
COSEC VYOM VMM UD1000K	Visitor Management for 1,000,000 User Days
COSEC VYOM CMM UD1K	Cafeteria Management for 1,000 User Days
COSEC VYOM CMM UD10K	Cafeteria Management for 10,000 User Days
COSEC VYOM CMM UD100K	Cafeteria Management for 100,000 User Days
COSEC VYOM CMM UD1000K	Cafeteria Management for 1,000,000 User Days
COSEC VYOM CWM UD1K	Contract Workers Management for 1,000 User Days
COSEC VYOM CWM UD10K	Contract Workers Management for 10,000 User Days
COSEC VYOM CWM UD100K	Contract Workers Management for 100,000 User Days
COSEC VYOM CWM UD1000K	Contract Workers Management for 1,000,000 User Days
COSEC VYOM JPC UD1K	Job Processing and Costing for 1,000 User Days
COSEC VYOM JPC UD10K	Job Processing and Costing for 10,000 User Days
COSEC VYOM JPC UD100K	Job Processing and Costing for 100,000 User Days
COSEC VYOM JPC UD1000K	Job Processing and Costing for 1,000,000 User Days
COSEC VYOM FVM UD1K	Field Visit Management for 1,000 User Days
COSEC VYOM FVM UD10K	Field Visit Management for 10,000 User Days
COSEC VYOM FVM UD100K	Field Visit Management for 100,000 User Days
COSEC VYOM FVM UD1000K	Field Visit Management for 1,000,000 User Days
COSEC VYOM ESS UD1K	Employee Self Service for 1,000 User Days
COSEC VYOM ESS UD10K	Employee Self Service for 10,000 User Days
COSEC VYOM ESS UD100K	Employee Self Service for 100,000 User Days
COSEC VYOM ESS UD1000K	Employee Self Service for 1,000,000 User Days
COSEC VYOM FR UD1K	Face Recognition for 1,000 User Days
COSEC VYOM FR UD10K	Face Recognition for 10,000 User Days
COSEC VYOM FR UD100K	Face Recognition for 1,00,000 User Days
COSEC VYOM FR UD1000K	Face Recognition for 10,00,000 User Days

# MATRIX NETWORK



## WHO WE ARE

- 60+ Security Products
- 700+ Man-Years of R&D Experience
- 2,500+ Channel Partners
- 1 Million+ Satisfied Customers
- 24x7 Technical Support
- Global Footprints: Asia, Europe, Africa, Northern and Southern America, Middle East and Australia
- Quality Certifications: CE, FCC, TEC, RoHS, STQC

## MATRIX CUSTOMERS

### MANUFACTURING

- Adani Infrastructure
- L&T Limited
- Linde Engineering
- TATA Steel
- Reliance Industries
- Tyco Electronics
- Seferge Limited
- AIA Engineering
- Gujarat Ambuja Exports
- Aujan, KSA
- Al Khodari, KSA

### BFSI

- State Bank of India
- Reserve Bank of India
- Gruh Finance
- Mahindra & Mahindra
- Shriram Finance

### EDUCATIONAL INSTITUTE

- British School
- MIT College
- Presidency Group of Colleges
- Indian Institute of Science
- Rishikul Vidyapeeth

### GOVERNMENT

- Indian Air Force
- Ministry of Interiors, KSA
- BHEL
- Power Grid
- AP Police
- Jeevika Development Society
- Dubai Statistics Center

### HEALTHCARE

- Gold's Gym
- Fortis Memorial
- Dr. Reddy's Foundation
- Apollo Health & Lifestyle
- CIIGMA
- VIVA Gym, South Africa

### IT

- Wipro
- Tata Consultancy Services
- Risk Management Solutions
- Intec Capital Ltd.
- YOU Telecom and Broadband

### CONSTRUCTION

- Rustomjee Group
- Raheja Atlantis
- Shapoorji & Palanji
- Sterling & Wilson
- AFCONS Construction

### OTHER SECTORS

- Khimji Ramdas, Oman
- TCI Express
- Big Bazaar
- Burger King
- FedEx

## ABOUT MATRIX

Established in 1991, Matrix is a leader in Telecom and Security solutions for modern businesses and enterprises. Matrix, an innovative, technology driven and customer focused organization, is committed to keep pace with the revolutions in the telecom and security industries. With more than 40% of its human resources dedicated to the development of new products, Matrix has launched cutting-edge products like IP-PBX, Universal Gateways, VoIP Gateways and Terminals, GSM Gateways, Access Control, Time-Attendance and Video Surveillance solutions. These solutions are feature-rich, reliable and conform to the international standards. Having global footprints in Asia, Europe, North America, South America and Africa through an extensive network of more than 2,500 channel partners, Matrix ensures that the products serve the needs of its customers faster and longer. Matrix has gained trust and admiration of customers representing the entire spectrum of industries. Matrix has won many international awards for its innovative products.